

## **Easy Fit Flyscreen Queen Roller Door 150 x 240 Fitting Instructions** **Read in conjunction with the supplied schematic drawing.**

Measure the reveal/alcove or the frame on which you want to mount the roller door. Do not unroll the screen before cutting (fig 1). You can cut below the ruler marking.

1. Measure the height of the doorway or reveal.
2. If you need to adjust the height then use a mitre box with a hacksaw or a mitre saw to ensure the cut is straight.
3. You can cut below the rule line.
4. So cut through the fully assembled Roller.
5. File off any sharp edges and tap out any shavings. Discard the supplied end, even if not cutting for height as that is a dummy end.
6. Push fit the supplied end (fig 2) supplied in the box into the end.
7. Slide the handles into the screen profile and the brushes on the screen profile and the roller cassette edge. Also top and tail that profile with T shaped caps.
8. Decide which side of the doorway you wish to mount the roller cassette.

To fix inside a reveal you can:

- (a) Take the stainless steel brackets and fix those to the inside wall. The cassette can be pushed onto them.
- (b) Utilising the top and bottom brackets screw upwards into ceiling and downwards into the floor with the 4 screws and raw plugs.
- (c) Cut the end profile to the height of the doorway and slide in the brush, the two door clips and then the black plastic end pieces. This profile does not have to be screwed into the wall. (fig 4)
- (d) Cut the top profile (deep) and bottom profile (shallow with drain holes) to fit from the cassette to clip into the plastic end pieces. Ideally cut these profiles together. (fig 5-6)
- (e) When in position use the drill guide to drill into the floor and ceiling. (fig7)

To face fix (this can be done with hook and loop tape)

- (a) You can optionally cut off the black top and bottom brackets if you do not plan on screwing to the floor (although we would recommend doing this).
- (b) The roller cassette can be held against the door frame with double sided tape.
- (c) Use the small angles positioned at the top and bottom of the cassette drilling into the cassette and using the smaller self tapping screws. The larger screw can go into the door frame. (fig 9)

- (d) Cut the end profile to the height of the doorway and slide in the brush, the two door clips and then the black plastic end pieces. This profile can be screwed into the door frame. (fig 4)
- (e) Cut the top profile (deep) and bottom profile (shallow with drain holes) to fit from the cassette to clip into the plastic end pieces. Ideally cut these profiles together. (fig 5-6)
- (f) These profiles can be fitted to the frame by drilling horizontally. (fig 8) The first hole should be large enough for a screw and screwdriver to fit through. The second hole, flush to the frame should be smaller so that the screw head fixes the profile tight against the frame. Glue white covers over the holes. The top profile can be fitted with the angles. The bottom profile is best screwed to the floor.

Always use a spirit level to ensure everything is square otherwise the screen will not work properly.

To loosen the spring tension, prise out the end of the cassette with the spring in it. Hold it firmly so that it does not spin out, then turn clockwise to increase tension and anti clockwise to loosen. Then push back into the cassette.

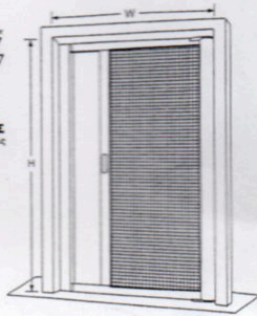
To Use Hook and Loop Tape apply the self adhesive tape to the profiles and roller and press to the door frame. Trial fit first before applying the tape.

# **SITAL**  
 ΣΥΣΤΗΜΑΤΑ ΣΙΤΑΞ  
 Ουσική προστασία

ΟΔΗΓΙΕΣ ΤΟΠΟΘΕΤΗΣΗΣ  
 ΣΥΡΩΜΕΝΗΣ ΜΟΝΟΦΥΛΛΗΣ  
 ... και ξεχάστε τους απρόσκλητους επισκέπτες

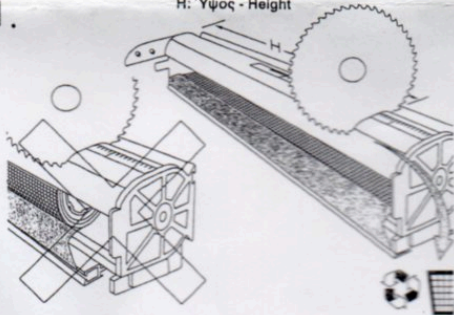


SETUP GUIDE  
 ... and forget the unwanted visitors



1.

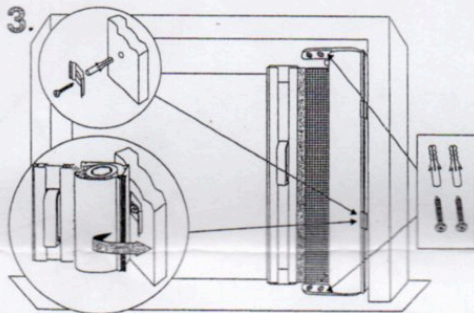
H: Ύψος - Height



2.

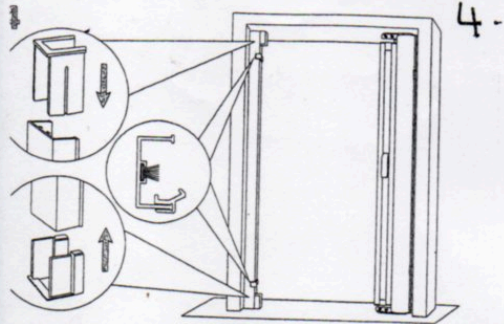
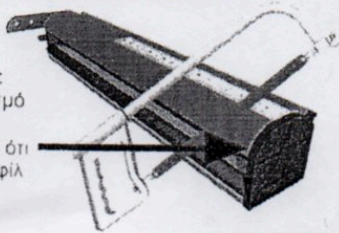


3.



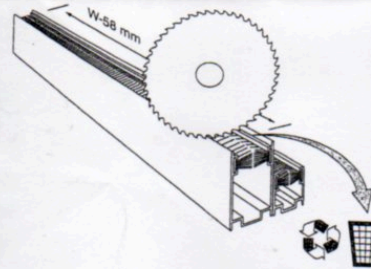
**ΠΡΟΣΟΧΗ!!!**

Πριν κόψετε  
 τον μηχανισμό  
 της σήτας  
 βεβαιωθείτε ότι  
 όλα τα προφίλ  
 είναι σε  
 μια ευθεία

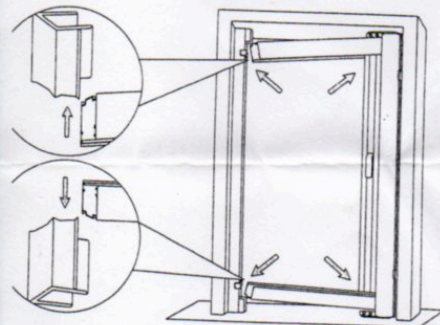


W: Πλάτος - Width

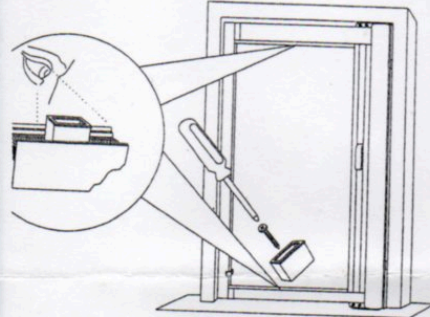
4.



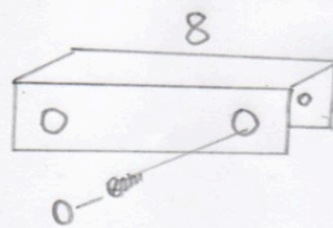
5.



6.



7.



8.



9.